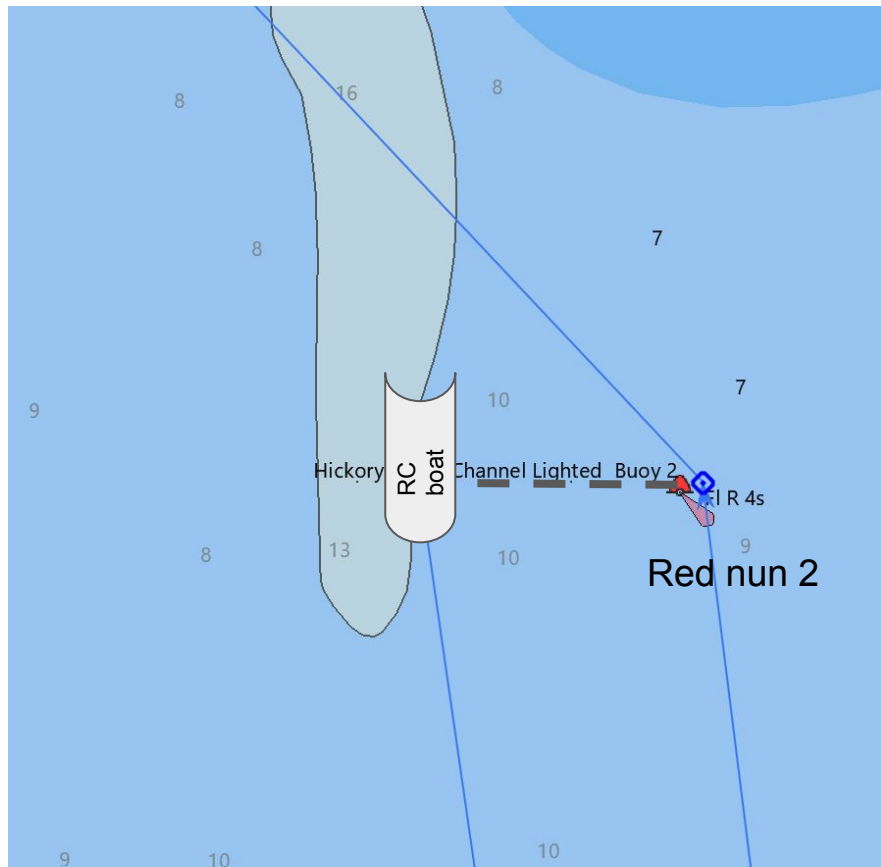


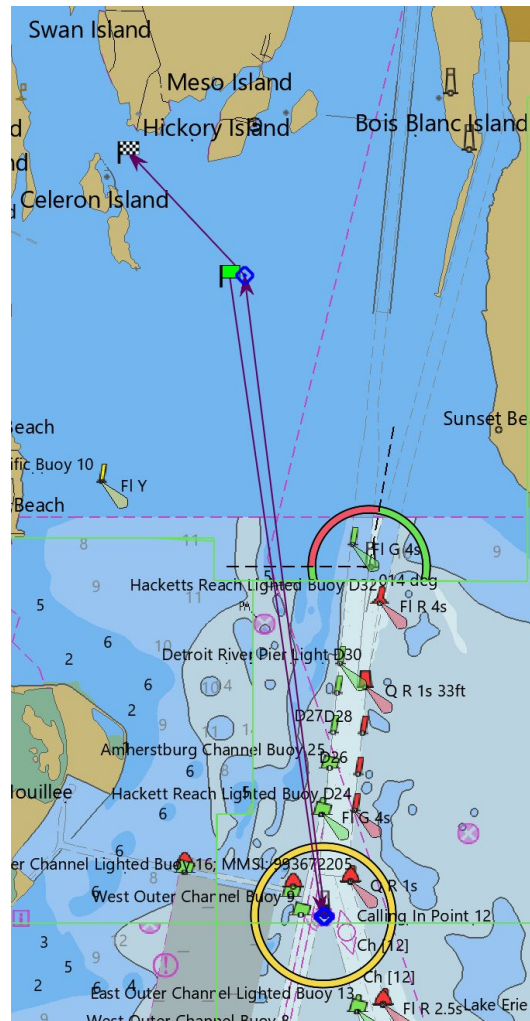
The Start



The Finish



The finish line is an imaginary line straight out of the FYC east basin through the green entrance buoy.



The Course:

- From the Start at R"2" FI R 4s, proceed to Detroit Light, round to starboard
- Proceed to R"2" FI R 4s, round to Port, fire up your auxiliary and put your sailing gear away so you can head to the FYC bar as soon as you hit the dock!
- Proceed to the finish line

Approximate Mark Locations

- | | | |
|------------------------|----------------|-----------------|
| ● R"2" FI R 4s | 42° 04.3555' N | 083° 09.2071' W |
| ● Detroit Light | 42° 00.0278' N | 083° 08.4938' W |
| ● FYC east basin green | 42° 05.2031' N | 083° 10.2874' W |